



ROUNDS AND ROUNDS IT GOES.

Some see a powerful, application-rich device that processes patient data. We see a seamless workflow between the patient and caregiver.

→ **THE MCW-100** ←



1-866-682-2538

www.MotionComputing.com



Make Your Work Flow.

MOTION CLINICAL WORKSTATION SPECIFICATIONS

→ MCW-100 ←

MOBILE CLINICAL WORKSTATION PRODUCT SPECIFICATIONS

A simple, modular clinical workstation that is easy to configure and upgrade as your workflow requirements change.

INDEPENDENT WORK SURFACE

- 27" to 47" Adjustable Height

SLIDE OUT KEYBOARD TRAY

- 16" W x 14" D

WORK SURFACE

- 15" W x 10.25" L

DRAWERS/STORAGE

- 16" W x 14" D

CART OVERALL HEIGHT

- 61.5" H

CART WEIGHT

- 97 lbs.¹

EXPANSION / STORAGE OPTIONS

- Removable storage bin with dividers: 12" W x 12" L x 4" D
- Utility basket: 8" W x 12" L x 6" D

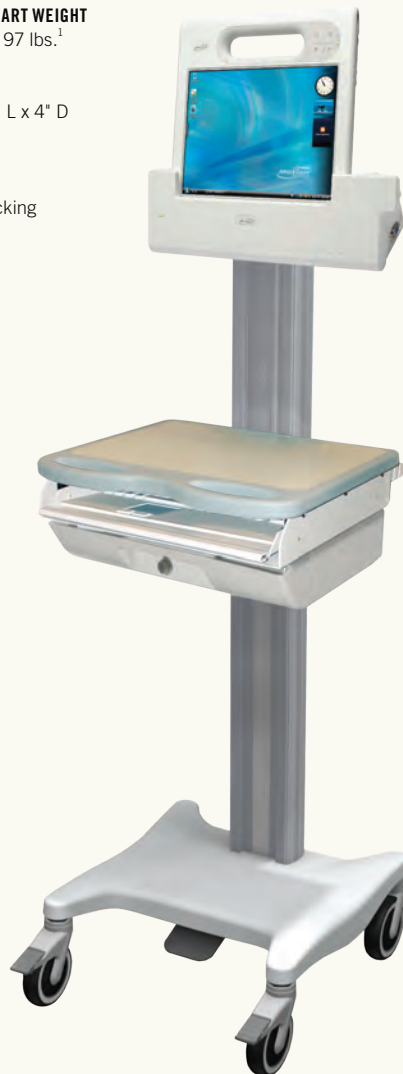
CASTERS

- Four swivel: 2 swivel locking, 1 locking, 1 non-locking

CART BASE DIMENSIONS

- 18" W x 18" H x 2.51" D

MOTION CLINICAL WORKSTATION IS COMPATIBLE WITH THE MOTION C5 OR J3400²



MOBILITY SOLUTIONS TO ENSURE SUCCESSFUL DEPLOYMENTS

The MCW is available with a broad range of planning and support services including pre-deployment planning, go live support and post deployment optimization. For more information visit www.motioncomputing.com/products/mobility_solutions.asp.

MOTION'S INDEPENDENTLY VARIABLE HEIGHT WORK SURFACE

The work surface, keyboard tray, drawer and tablet all move independently of any accessories attached to the column. The MCW's work surface easily supports both clinicians that prefer to sit or stand.

DESIGNED FOR DURABILITY AND LONG-LIFE USE

Motion offers standard and extended warranty coverage.

WARRANTY

- MECHANICAL: 3-year

ACCESSORIES

- Barcode Scanner Mount
- Channel Mount Utility Basket-3.5"/8.9 cm
- Motion J3400 Docking Station and Battery Charger
- Motion C5 Docking Station and Battery Charger
- Mobile Dock for C5 from RAM Mounts

Additional drawers, mounting brackets and accessories are available

MOTION CARTWISE FLEET SERVICES

Value added services to help extend your capital investment in all types of carts and mobile workstations.



www.MotionComputing.com

¹The Motion Computing specifications are based on the standard MCW configuration. Adding additional devices to the cart will add to the weight of the cart.

²Motion C5 or J3400 tablet and dock purchased separately.

© 2010 Motion Computing, Inc. All rights reserved. All product information is subject to change without notice. Motion and Motion Computing are registered trademarks of Motion Computing, Inc. in the United States and/or other countries. All other trademarks and registered trademarks are the property of their respective owners. Part number: 004-87-00301 Rev. A00